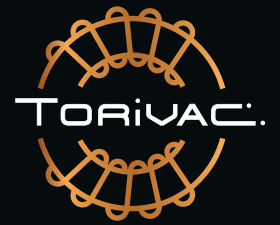


STEUERKNÖPFE,
METALLHALTERUNGEN FÜR LEDS,
KLEMMEN, STECKDOSEN UND
SICHERUNGSHALTER

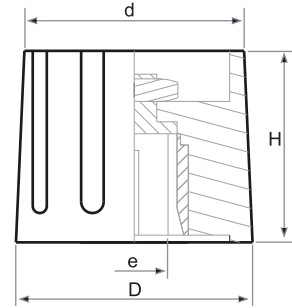
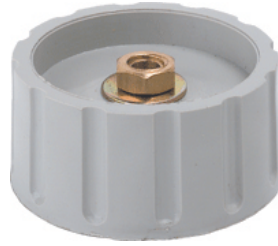




BO- Modellreihe (glänzend)

MOD. TYPE	D	e	H	d
10	10	3 y 4	14	8,5
15	14,5	4,6	15	13
21	21	4,6	17	19,5
30	29,5	4,6	17,5	28
38	38	4,6,8	18,5	36,5

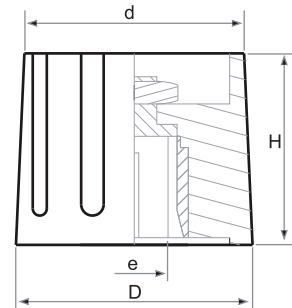
Auf Anfrage fertigen wir 1/4" in allen Modellen außer Mod. 10



BO- Modellreihe mit Linien

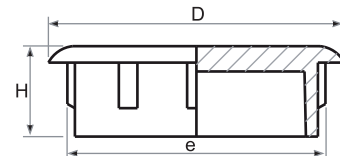
MOD. TYPE	D	e	H	d
10	10	3 y 4	14	8,5
15	14,5	4,6	15	13
21	21	4,6	17	19,5
30	29,5	4,6	17,5	28
38	38	4,6,8	18,5	36,5

Auf Anfrage stellen wir 1/4" in allen Modellen außer Mod. 10 her.



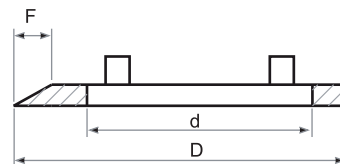
Deckel

MOD. TYPE	D	d	e
15	26	9,8	2,8
21	36	16	2,8
30	45	21,5	2,8
38	55	27	2,7



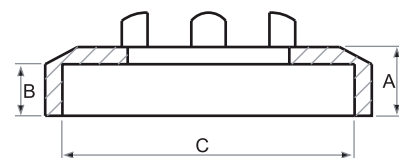
Pfeilringe

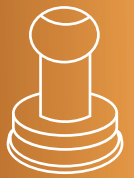
MOD. TYPE	D	e	H
10	8	6,5	8,5
15	11	10	13
21	18	15,7	19,5
30	25,5	23,8	28
38	33,5	30,5	36,5



Mutterabdeckungen

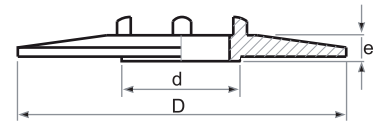
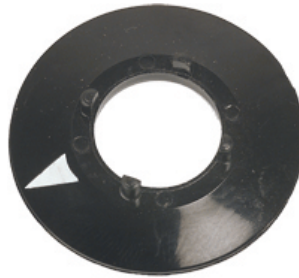
MOD. TYPE	A	B	D
10	3,5	2,5	14
15	4	3	17





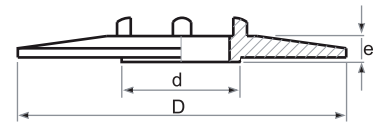
Scheiben mit Pfeil

MOD. TYPE	D	d	e
15	26	9,8	2,8
21	36	16	2,8
30	45	21,5	2,8
38	55	27	2,7



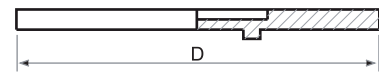
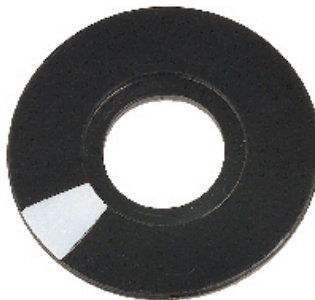
Graduierte Scheiben

MOD. TYPE	D	d	e
15	26	9,8	2,8
21	36	16	2,8
30	45	21,5	2,8
38	55	27	2,7



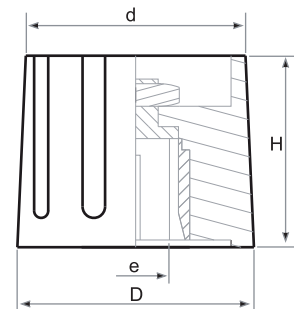
Statoren

CÓD. CODE	MOD. TYPE	D
BOS014	15	26
BOS021	21	36
BOS029	30	44



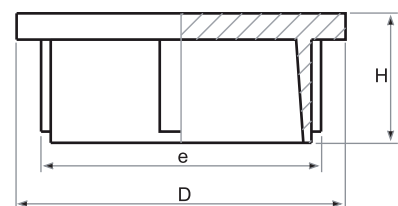
BM-Modellreihe (matt)

MOD. TYPE	D	e	H
15	14,5	4,6,1/4"	16
21	20,6	4,6,1/4"	19



Abdeckungen für BM-Taste (matt)

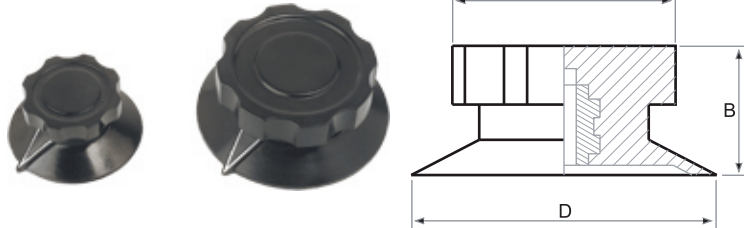
MOD. TYPE	D	e	H
15	12	4,6,1/4"	6,2
21	18,8	4,6,1/4"	7,4





Bakelit-Knopf (DF)

MOD. TYPE	A	B	D	E
29DF	29	20	38	15,5
38DF	38	22	52	17
61DF	61	31	76	18



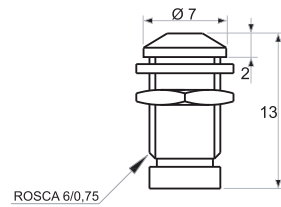
Abgestufte Frontplatten

Código Code	Ø	Grabado Printed	Ángulo Rotat. Angle	Color Colour
CA0050180	50	0-100%	180°	Gris / Grey
CA0050270	50	0-100%	270°	Gris / Grey
CA0080270	80	0-100%	270°	Gris / Grey
CA0080305	80	0-100%	305°	Gris / Grey
CA0116270	116	0-100%	270°	Gris / Grey
CA0116310	116	0-100%	310°	Gris / Grey
CA0116330	116	0-100%	330°	Gris / Grey
CA0080230	80	0-230v	330°	Negro / Black
CA0080250	80	0-250v	340°	Negro / Black
CA0115230	116	0-230v	330°	Negro / Black
CA0115250	116	0-250v	330°	Negro / Black
CA0115330	116	0-100%	330°	Negro / Black
CA0160330	116	0-100%	328°	Azul / Blue

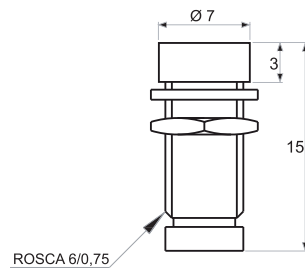




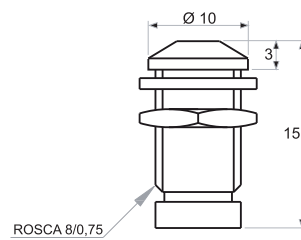
Metallhalterungen für 3mm LEDs



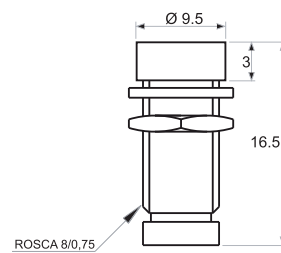
Metallhalterungen für 3mm LEDs



Metallhalterungen für 5mm LEDs

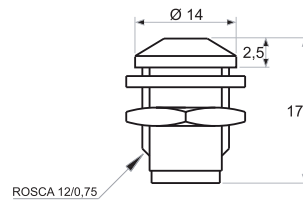


Metallhalterungen für 5mm LEDs

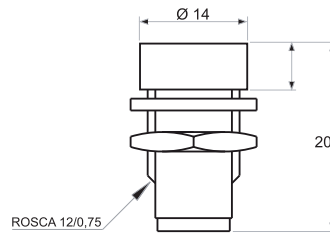




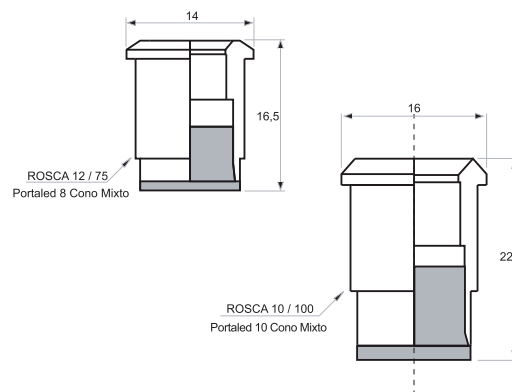
Metallhalterungen für 8mm LEDs



Metallhalterungen für 8mm LEDs

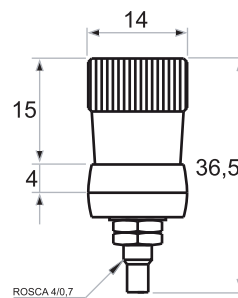


Metallhalterungen für 10mm LEDs

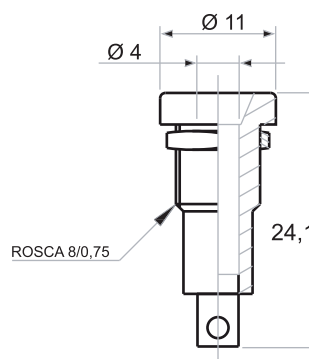




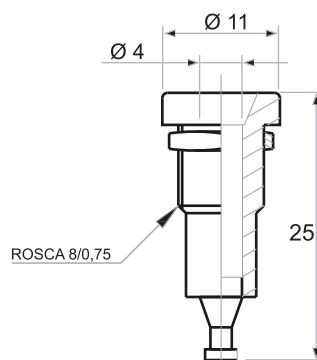
BPB -30 A / 230V.



HB -4

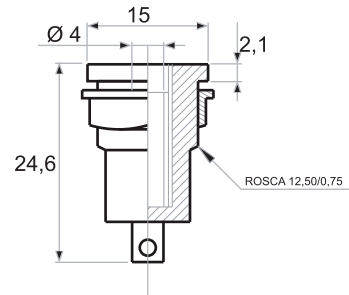


HR -4

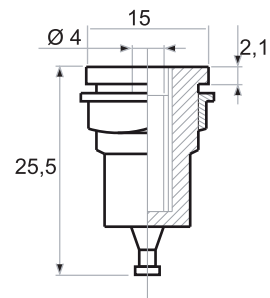




HBS -4



HSR -4



PF -15

